



www.stromi-nn.ru

DESIGN AND PRODUCTION OF VIBRATING CLASSIFIERS, VIBRATING SIEVES, CRUSHERS



Contents:

Vibrating classifiers, vibrating sieves, crushers. General information.....	2
Two-roll crusher DV(S)2-10(15)A.....	3
Hammer-type crusher DMS-40A.....	5
Rotary crusher DR-10.....	7
Lump crusher DK-4000.....	9
Vibrating sorting machine A10.....	11
Vibrating sieve H10.....	13
Vibrating sieve H20.....	15

Vibrating classifiers, vibrating sieves, crushers

“Stromizmeritel” manufactures the following equipment for crushing, sieving, pulping and grading (sorting) of glass mixture and different multi-component mixtures raw materials:

- pulping devices, material agitators and lump rippers;
- double-roll crushers with a productivity rate of 5 to 15tonnes/hour;
- rotary crushers with a productivity rate of 10 to 20tonnes/hour;
- hammer-type crushers with a productivity rate of 25 to 40tonnes/hour;
- jaw crushers with a productivity rate of up to 20tonnes/hour;
- vibrating sieves N 20 and N 10 with a productivity rate of 10 to 40tonnes/hour for materials of small and medium abrasive power (soda, dolomite, sand etc.);
- classifiers A 10 with a productivity rate of 5 to 12tonnes/hour for materials of medium and high abrasive power (glass cullet, refractory materials etc.).

Hammer-type, rotary, double-roll and jaw crushers manufactured by “Stromizmeritel” are mainly designed for crushing of sheet and bagged glass and are used in the foreign and own cullet processing lines, as well as for utilization of the automotive and building triplex glass.

Vibrating sieves N 20 and N 10 and classifiers A 10 are intended for raw materials sieving and sorting. The produced models of the sieving machines have either two outlets (one-sieve) or three outlets (double-sieve) and are equipped with the unbalanced mass electric vibration generators. A modern frameless mesh mounting and straining system is used in the structures of sieves and classifiers.

TWO-ROLL CRUSHER DV(S)2-10(15)A

APPLICATION

Two-roll crushers DV2-10A and DV2-15A are designed for crushing of waste in production of glassware with wall thickness of max. 12mm. Two-roll crushers DVS2-10A and DVS2-15A with stepped drums are designed for crushing of waste in production of sheet glass with sheet thickness of max. 12mm.

Operation conditions of the crusher:

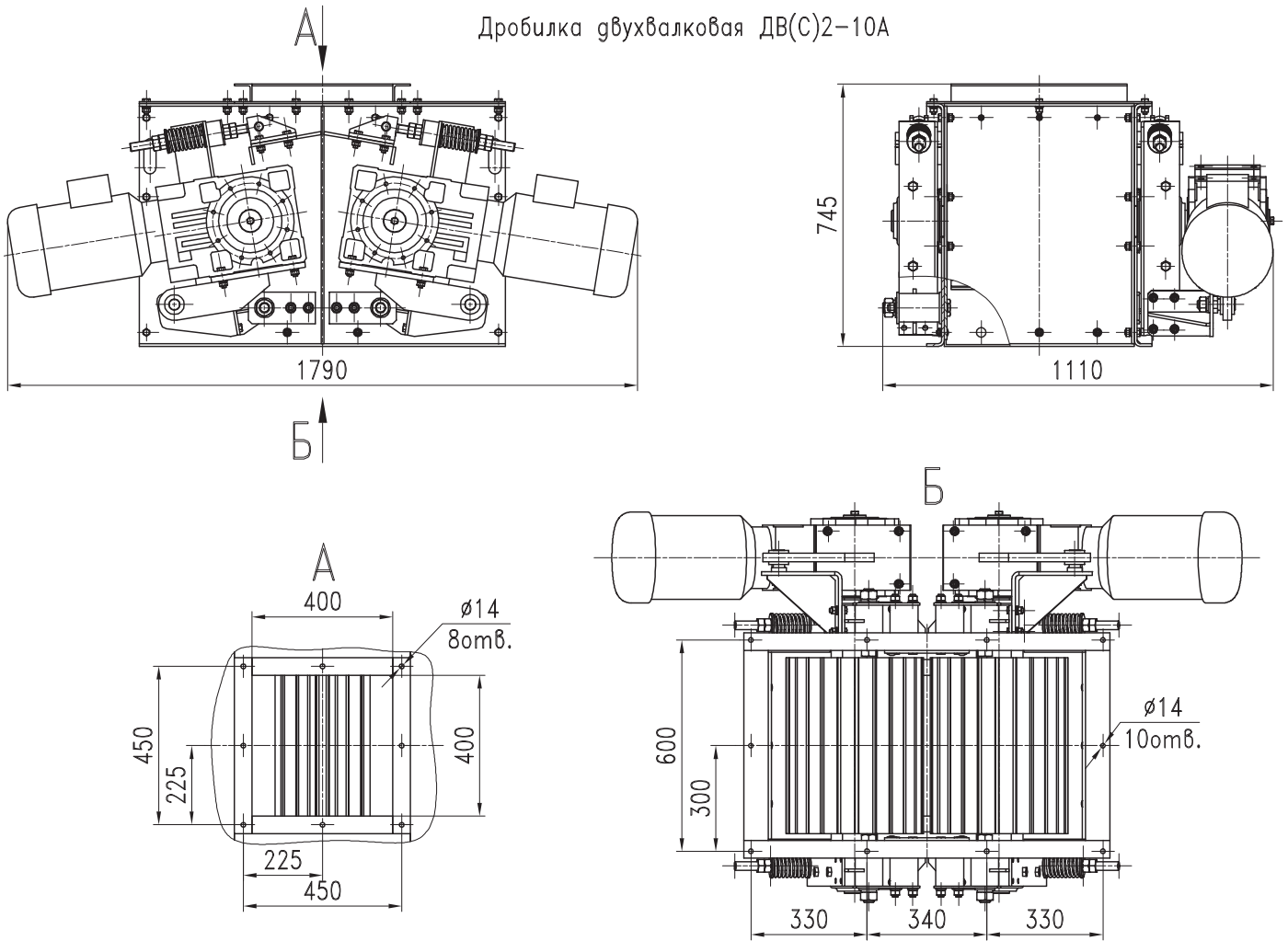
- ambient temperature, °C (K).....from -30 to +40 (243-313)
- relative air humidity, %.....90 (at t=25°C)
- atmosphere pressure, kPa (mm Hg),.....84-106,7 (630-800)
- parameters of electric power supply are indicated in the table.

BASIC TECHNICAL SPECIFICATIONS

Parameter	DV(S)2-10A	DV(S)2-15A
Capacity, tons/hour	6...10*	9...15*
Grain size after crushing, mm	5...30	5...30
Rotation frequency of the driven shaft, rotations/min.	60	60
Adjustable clearance between roll drums,mm	5...40	5...40
Gear motor type	A503 NH55 24,0 S4 B3 M4SA4	A503 NH55 24,0 S4 B3 M4LA4
Nominal power of the drive, kW	11 (2x5,5)	15 (2x7,5)
Number of gear motors	2	2
Electric power supply voltage, V	380±38	380±38
IP code of the electric motor	IP55	IP55
Overall dimensions (l:w:h), mm	1110:1790:745	1510:1790:745
Weight, max., kg	925	1190

* – actual capacity depends on the properties of the processed material and crushing conditions

Дробилка гвухвалковая ДВ(С)2-10А



STROMIZMERITEL

34-A, Sovnarkonovskaya Str., Nizhny Novgorod, 603086, Russia

Phone/Fax: +7 (831) 435-13-70, 8 (800) 550-59-70. E-mail: stromizmeritel@rambler.ru

HAMMER-TYPE CRUSHER DMS-40A

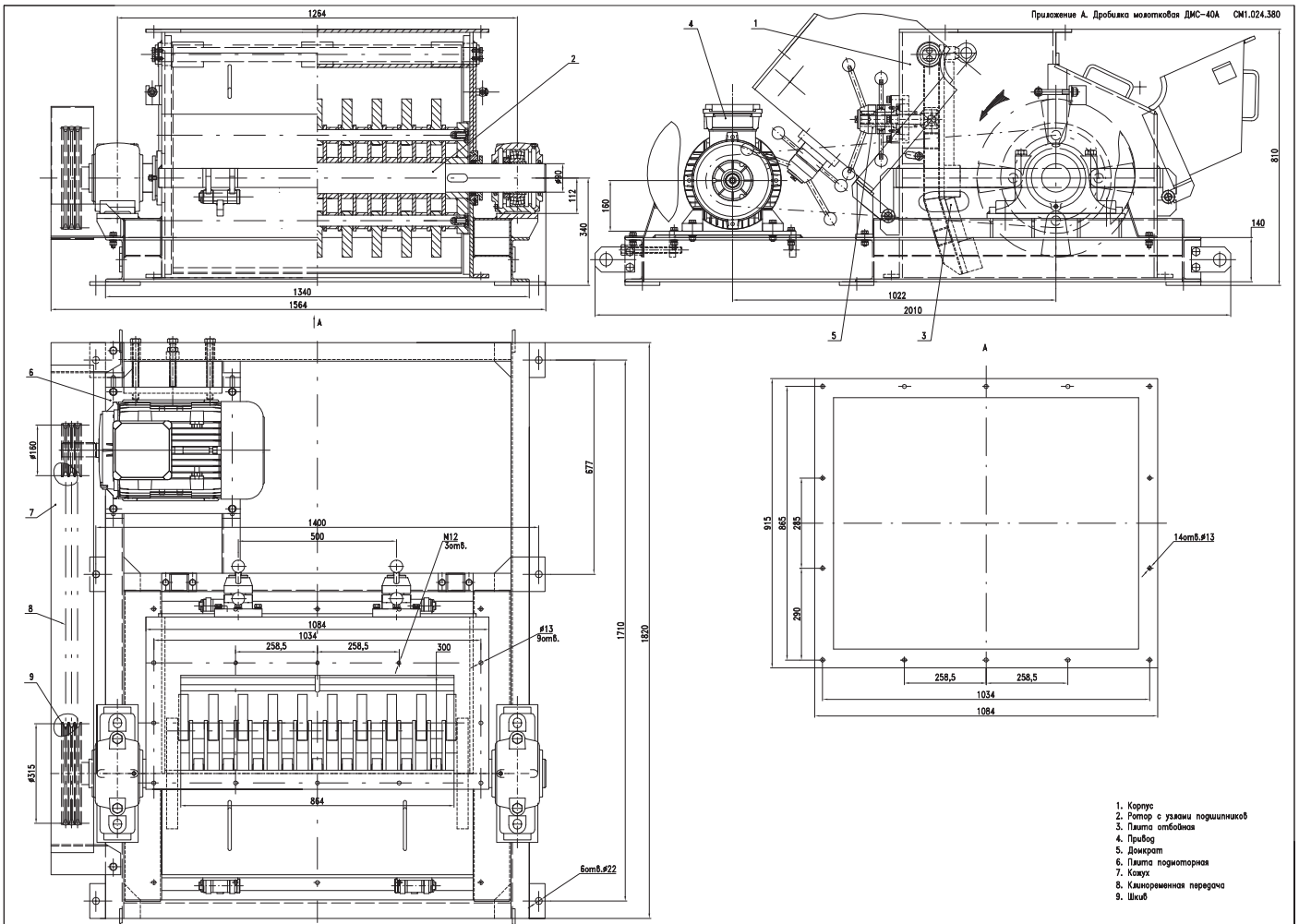
APPLICATION

Hammer-type crusher DMS-40A is designed for crushing of waste in the sheet glass or glassware production with sheet or wall thickness of max. 12mm, as well as for crushing of granulated glass mass with grain size of max. 30mm.

BASIC TECHNICAL SPECIFICATIONS

Parameter name	Parameter value
Maximal capacity, tons/hour	40
Grain size of the crushed glass at the output of the crusher, mm	Up to 30
Nominal rotation frequency of the rotor, rotations/min.	735
Adjustable clearance between the hammers and impact plate, mm	10...40
Number of hammers	38
Nominal power of the electric motor, kW	11
IP code of the electric motor	IP55
Voltage of AC power supply, V	380±38
Overall dimensions (l x w x h), mm	2010x1565x810
Weight of the rotating parts, kg, max.	390
Weight of the crusher, kg, max.	1900

Operation principle of the crusher is as follows: the incoming material is fed through the loading flange of the crusher into the crusher body. When passing through the crusher body the material reaches the rotating hammers, partially breaks up and is thrown by the hammers to the impact plate. There are 2 beams on the plate which crush the material fully. Grain size of the material at the output depends on clearance between the hammers and the impact plate. The recommended rotation frequency of the rotor should be approximately from 470 to 735 rotations/min.



STROMIZMERITEL

34-A, Sovnarkomovskaya Str., Nizhny Novgorod, 603086, Russia

Phone/Fax: +7 (831) 435-13-70, 8 (800) 550-59-70. E-mail: stromizmeritel@rambler.ru



ROTARY CRUSHER DR-10

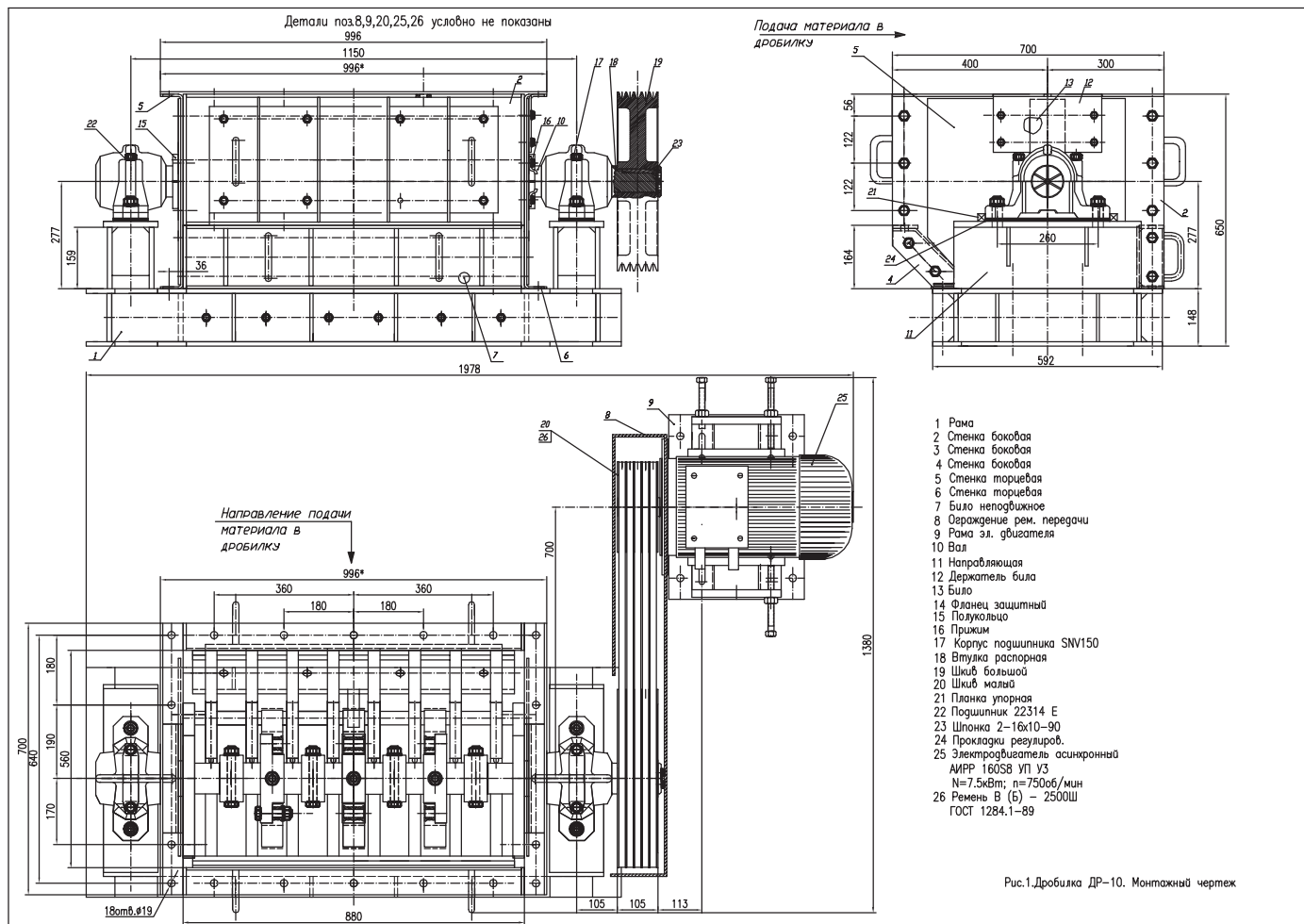
APPLICATION

The rotary crusher, hereinafter referred as the crusher, is designed for crushing of different lump materials and can be used in mining and metallurgical industry, as well as in production of building materials before feeding into conveying equipment in production rooms with ambient temperature from -5° to $+40^{\circ}$.

BASIC TECHNICAL SPECIFICATIONS

Parameter name	Parameter value
Capacity, tons/hour	6...10*
Compression strength of the incoming material, min., MPa	320
Lump size of the processed material, max., mm:	250
Grain size after crushing, mm	20...30
Number of moving impact bars and pitch, pcs./mm	7/105
Number of fixed impact bars and pitch, pcs./mm	16/75
Rotation frequency of the driven shaft, rotations/min.	375
V-belt transmission ratio	2
Motor type	АИРР 160S8 УП У3
Power supply voltage, V	380
Consumed power, kW:	7,5
Overall dimensions, mm	1380x700x630
Weight, max., kg	800

*-actual capacity depends on the properties of the processed material and crushing conditions.



LUMP CRUSHER DK-4000

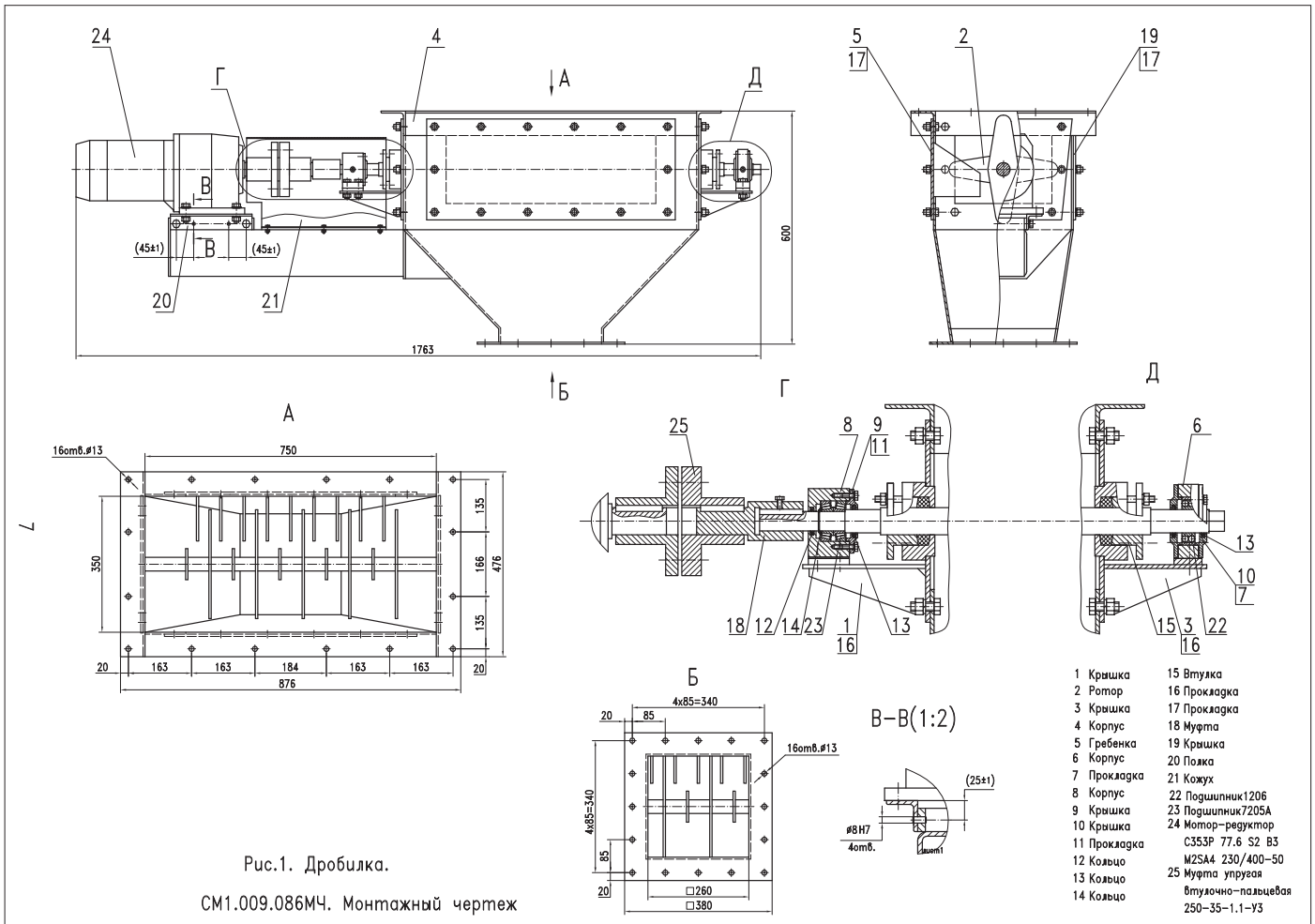
APPLICATION

The lump crusher DK-4000 is designed for crushing of caked materials (for example, caustic ash) prior to its delivery to the transportation equipment with humidity of not more than 3 % in industrial premises at ambient air temperature from -10° to +50°.

BASIC TECHNICAL SPECIFICATIONS

Parameter name	Parameter value
Capacity, kg/hour	4000*
Lump size of the material processed, mm, not more than:	250
Lump size after crushing, mm	10...15
Rotor rotating frequency, rev./min.	18
Rotor blade size, mm	280
Size of the chute discharged, mm	260x260
Gear-motor drive	C353P 77.6 S2 B3 M2SA4
Electric power supply voltage, V	380
Electric power input, kW:	0.75
Weight, kg, not more than	82

*- the actual capacity depends on the properties of the material being processed, crushing conditions and it is to be specified in the design



VIBRATING SORTING MACHINE A10

APPLICATION

Vibrating sorting machine A10 is designed for division of granular materials of medium and high abrasive ability with bulk density up to 2000 kg/m³ into three grain-size classes (dry sieving). It can be used in different branches of industry– mineral, chemical, building and glass industry.

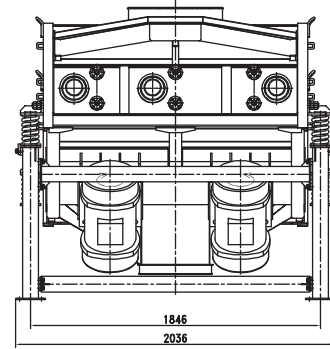
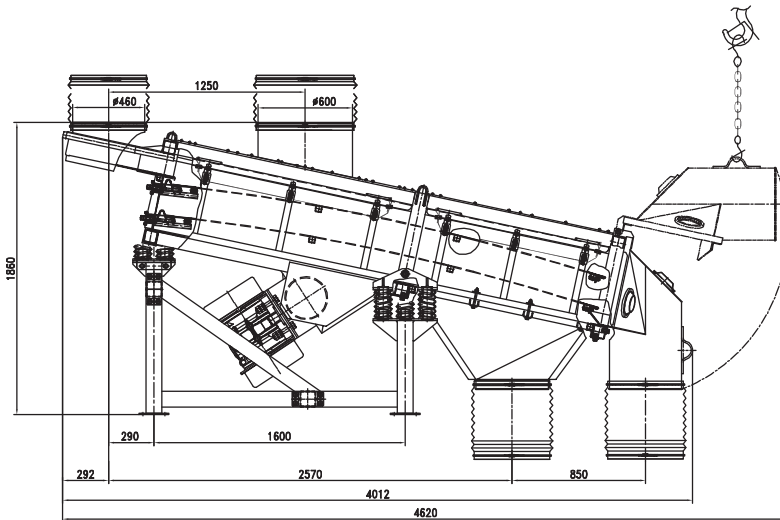
BASIC TECHNICAL SPECIFICATIONS

Parameter	Value
Estimate of capacity for dry glass scrap based on incoming material, tons/hour, max. (for dry bottle glass scrap)*	10
Incoming scrap size, mm, max.	60
Humidity of the incoming material, %, max.	0,5
Number of sieving surfaces layers	2
Number of fractions received	3
Angle of inclination of the sieving surfaces to the horizontal	25°
Dimensions of the sieving surfaces layers, mm	1050x2400
Permissible size of the sieving surfaces meshes in clear, mm	2,0...40
Standard size of grids of the sieving surfaces layers in clear**, mm	
Type of vibrating system	Rotating with free vibration
Amplitude of vibration, mm	3...12
Vibration frequency, Hz	16
Type of the electromechanical vibrator applied	MVE 8000/1 "OLI" Wamgroup, 230/400V, 50Hz, 3 phases, 1000 rotations/min.
or	MVSI 10/8000 S90 "Italvibras", 230/400V, 50Hz, 3 phases, 1000 rotations/min.
Number of vibrators	1
Consumed power, kW	7,1 (7,0)
Type of climatic modification as per GOST 15150	Y2 (with placement under a shed or in rooms with ambient temperature from -45° to +40°)
Overall dimensions of the sieve on the frame (length x width x height), mm	3115x1790x2160
Weight of the sorting machine with a positioning frame, kg	1740
Including: positioning frame, kg	160
Dynamic factor	5

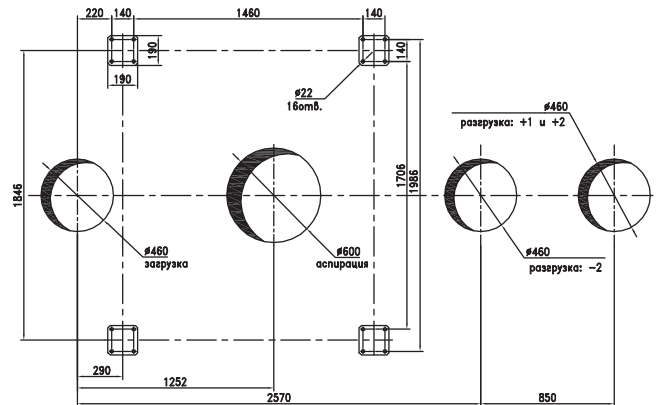
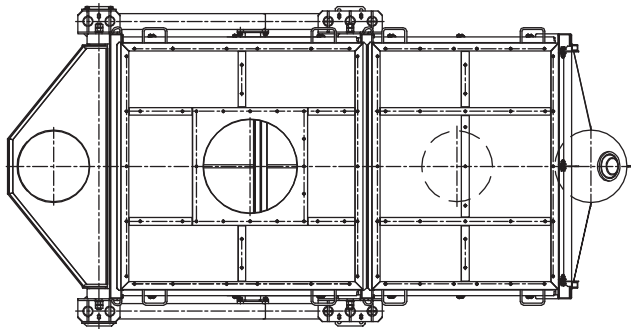
* Actual capacity depends on the incoming material properties, standard size of grids of the sieving surfaces, adjustment of vibrator eccentric mass position, operating conditions and should be specified when ordering the equipment.

** Size of the sieving surfaces meshes should be specified when ordering the equipment, the line will be filled when shipping the equipment.

Сито вибрационное Н20



Совмещенный план
загрузочной и разгрузочной воронок, аспирационного патрубка и отверстий для крепления рамы.



STROMIZMERITEL

34-A, Sovnarkomovskaya Str., Nizhny Novgorod, 603086, Russia
Phone/Fax: +7 (831) 435-13-70, 8 (800) 550-59-70. E-mail: stromizmeritel@rambler.ru

СТРОМИ
www.stromi-nn.ru

VIBRATING SIEVE H10

APPLICATION

Vibrating sieves H10 are designed for division of bulk granular materials of small and medium abrasive ability with bulk density up to 2000 kg/m³, depending on model, into several grain-size classes.

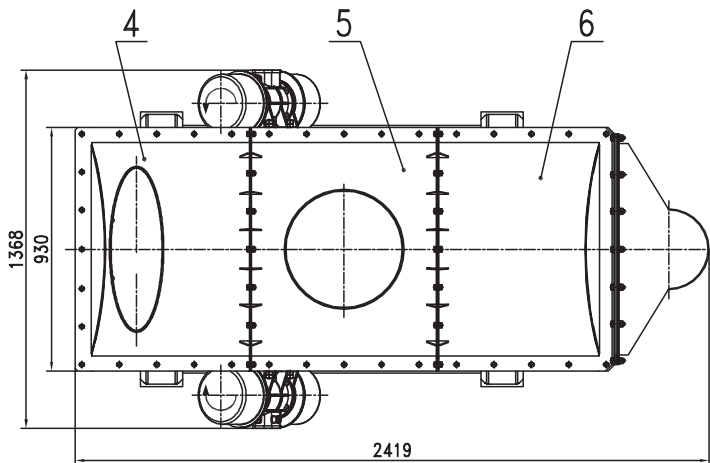
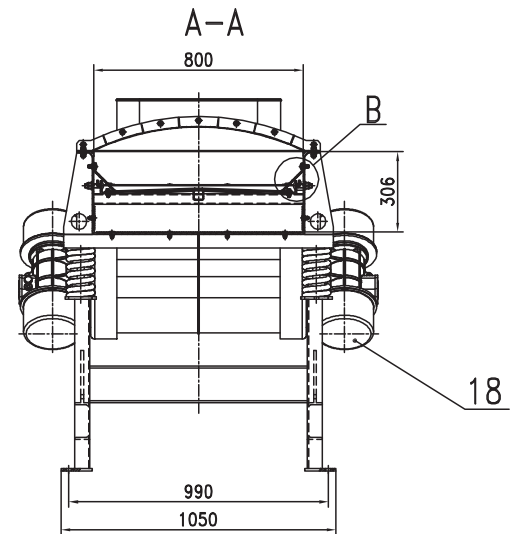
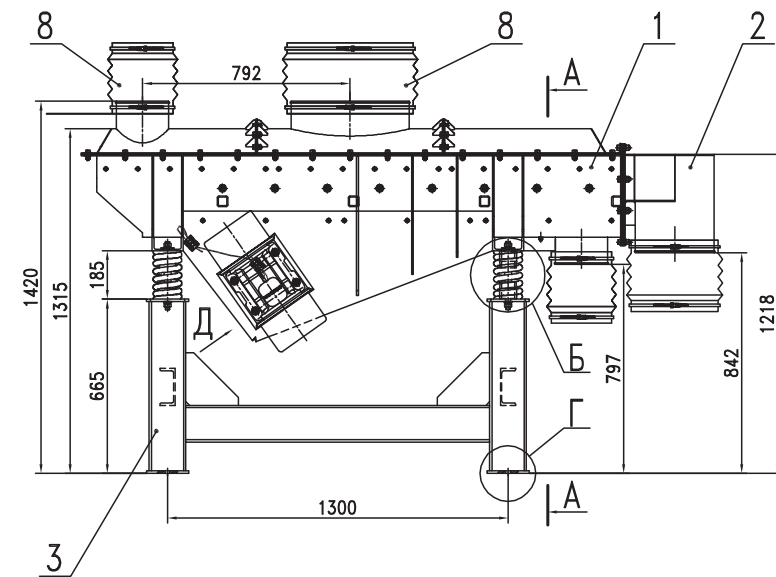
BASIC TECHNICAL SPECIFICATIONS

Parameter	Value
Estimate of capacity for dry sand based on the incoming material, tons/hour, (for dry soda) max.*	10
Incoming pieces size, mm, max.	30
Humidity of the incoming material, %, max.	0,5
Number of sieving surfaces	2
Number of fractions received	3
Angle of inclination of the sieving surfaces to the horizontal	0°
Dimensions of the sieving surfaces, mm	650x1580
Permissible size of meshes of the sieving surfaces in clear, mm	0,4...10
Type of the vibration system	One-directional reciprocating
Amplitude of vibration, mm	3...5
Vibration frequency, Hz	25
Type of electromechanical vibrators applied	MVE 9000/15"OLI" Wamgroup, 230/400V, 50Hz, 3 phases, 1500 rotations/min.
Consumed power, kW	3,2
Overall dimensions of the sieve on the frame (length x width x height), mm	2419x1368x1420
Weight of the vibrating sieve with the positioning frame, kg	790
including: positioning frame, kg	103
Dynamic factor	5

* Actual capacity depends on the incoming material properties, standard size of grids of the sieving surfaces, adjustment of vibrators eccentric mass position, operating conditions and should be specified when ordering the equipment.

** Size of the sieving surfaces meshes should be specified when ordering the equipment, the line will be filled when shipping the equipment.

Сито вибрационное Н10



- 1 Корпус
- 2 Кожух
- 3 Рама
- 4 Крышка передняя
- 5 Крышка средняя
- 6 Крышка задняя
- 7 Сито (просеивающая поверхность)
- 8 Промышленный шланг $\varnothing 460$
- 9 Гайка M16 DIN 985 (натяжка сетки)
- 10 Шпилька (M16, транспортная)
- 11 Гайка M16-6H.6.019 ГОСТ 5915-70
- 12 Шайба 16 65Г 019 ГОСТ 6402-70
- 13 Шайба 16.019 ГОСТ 6958-78
- 14 Шайба 16.019 ГОСТ 11371-78
- 15 Труба (транспортная)
- 16 Болт M16-6x90.88.019 ГОСТ 7798-70
- 17 Гайка M16-6H.8.019 ГОСТ 5915-70
- 18 Вибратор электромеханический

VIBRATING SIEVE H20

APPLICATION

Vibrating sieves H20 are designed for division of bulk granular materials of small and medium abrasive ability with bulk density up to 2000 kg/m³, depending on model, into several grain-size classes.

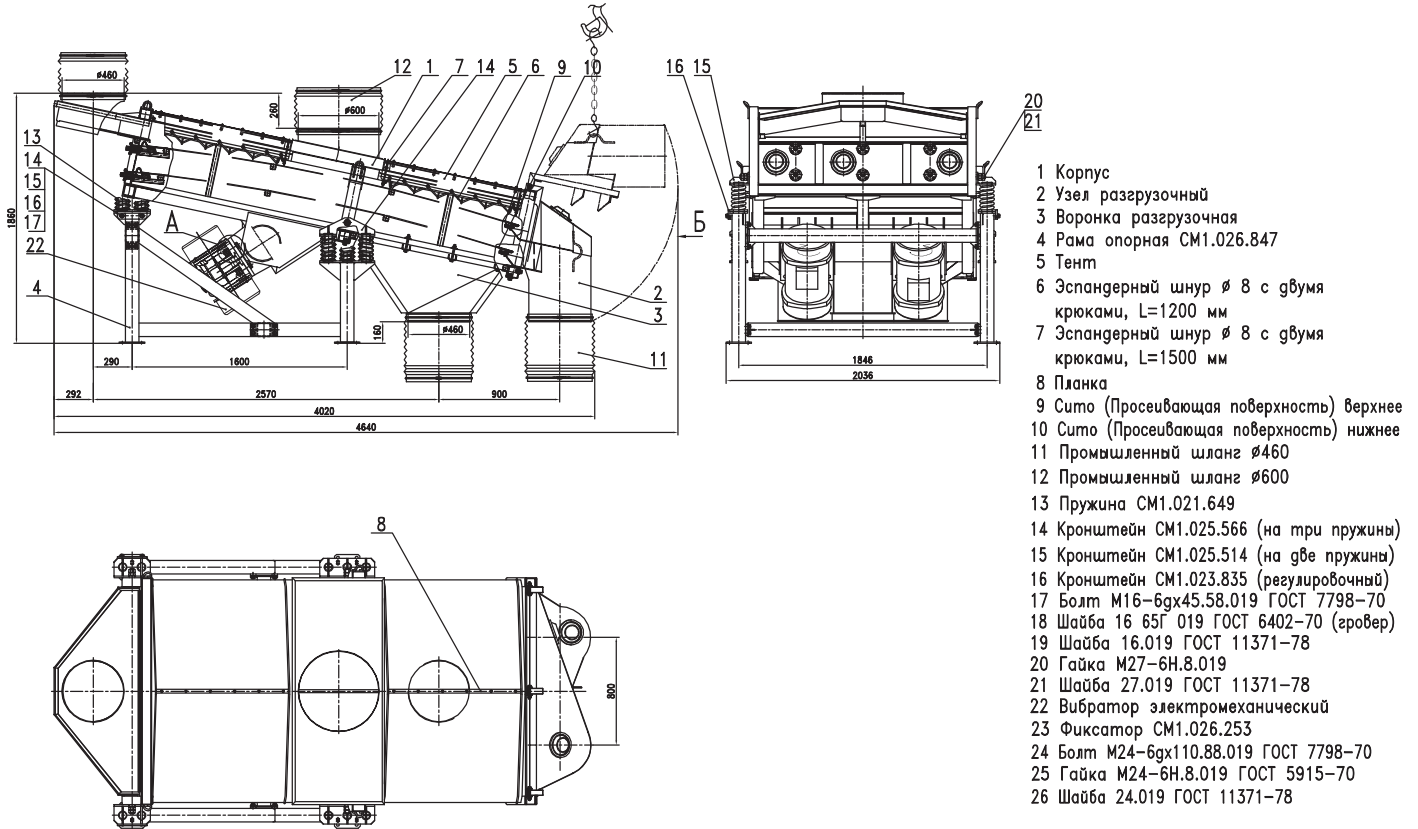
BASIC TECHNICAL SPECIFICATIONS

Parameter	Value
Estimate of capacity for dry sand based on the incoming material, tons/hour, (for dry soda) max.*	20
Incoming pieces size, mm, max.	30
Humidity of the incoming material, %, max.	0,5
Number of sieving surfaces	1
Number of fractions received	2
Angle of inclination of the sieving surfaces to the horizontal	6-17°
Dimensions of the sieving surfaces, mm	1470x2730
Permissible size of meshes of the sieving surfaces in clear, mm	0,4...10
Standard size of grids of the sieving surfaces**, mm	
Type of the vibration system	One-directional reciprocating
Amplitude of vibration, mm	3...5
Vibration frequency, Hz	25
Type of electromechanical vibrators applied	MVE 9000/15"OLI" Wamgroup, 230/400V, 50Hz, 3 phases, 1500 rotations/min.
Or	MVSI 15/9000 S90 "Italvibras" 230/400V, 50Hz, 3 phases, 1500 rotations/min.
Number of vibrators	2
Consumed power, kW	2x7,5 (2x7,0)
Air flow rate for aspiration, m ³ /hour, max.	1500
Type of climatic modification as per GOST 15150	Y2 (for placement under a shed and in rooms with ambient temperature from -45° to +40°)
Overall dimensions of the sieve on the frame (length x width x height), mm	4012x2036x1680
Weight of the vibrating sieve with the positioning frame, kg	2000 2030 2060
including: positioning frame, kg	180
Dynamic factor	5

* Actual capacity depends on the incoming material properties, standard size of grids of the sieving surfaces, adjustment of vibrators eccentric mass position, operating conditions and should be specified when ordering the equipment.

** Size of the sieving surfaces meshes should be specified when ordering the equipment, the line will be filled when shipping the equipment.

Сито вибрационное Н20



STROMIZMERITEL

34-A, Sovnarkomovskaya Str., Nizhny Novgorod, 603086, Russia

Phone/Fax: +7 (831) 435-13-70, 8 (800) 550-13-70. E-mail: stromizmeritel@rambler.ru